

# Northern Lights

BY ANDOVER FABRICS



Bearly Christmas Quilt designed by: **Nancy Rink**  
Quilt Size: 45" x 63" • [andoverfabrics.com](http://andoverfabrics.com)

andover : [makower uk](http://makower.uk)

# Beary Christmas Quilt



Introducing Andover Fabrics new collection: **NORTHERN LIGHTS** by Andover Fabrics

Quilt designed by Nancy Rink

Quilt finishes 45" x 63"

4 Block Y: 9" x 9"

4 Block Z: 9" x 9"

*What could be more delightful than a friendly polar bear to greet your guests this holiday season? The quilt is so quick and easy, you may be inspired to make several as gifts for special people on your list.*

## Cutting Directions

**Note:** Read assembly directions before cutting patches. All measurements are cut sizes and include 1/4" seam allowances. WOF designates the width of fabric from selvedge to selvedge (approximately 42" wide).

### Fabric A

Fussy-cut (1) panel 21 1/2" x 39 1/2"

### Fabric B

Cut (12) squares 4 1/4" x 4 1/4", cut in half diagonally twice to make 48 quarter-square triangles

Cut (4) squares 3 1/2" x 3 1/2"

Cut (16) strips 1" x 5 1/2" (Read Step 2)

### Fabric C

Cut (12) squares 4 1/4" x 4 1/4", cut in half diagonally twice to make 48 quarter-square triangles

Cut (4) squares 3 1/2" x 3 1/2"

Cut (16) strips 1" x 5 1/2"

### Fabric D

Cut (2) borders 2" x 42 1/2", cut crosswise

Cut (2) borders 2" x 27 1/2", cut crosswise

### Fabric E

Cut (4) rectangles 9 1/2" x 27 1/2"

Cut (8) squares 4 1/4" x 4 1/4", cut in half diagonally twice to make 32 quarter-square triangles

Cut (32) squares 3 1/2" x 3 1/2"

### Fabric F

Cut (2) borders 2" x 39 1/2", cut crosswise

Cut (2) borders 2 1/2" x 24 1/2", cut crosswise

### Backing

Cut (2) panels 35" x 51", pieced to fit quilt top with overlap on all sides

## Fabric Requirements

		Yardage	Fabric
<b>Fabric A</b>	center	1 panel (2/3 yard)	9096-B
<b>Fabric B</b>	blocks	3/8 yard	9097-B
<b>Fabric C</b>	blocks	3/8 yard	9097-BC
<b>Fabric D</b>	border	3/8 yard	9098-G
<b>Fabric E</b>	blocks, setting	1 1/4 yards	9099-L
<b>*Fabric F</b>	border	3/4 yard	9100-R
<b>Backing</b>		3 yards	9099-B

\*includes binding

## Making the Quilt

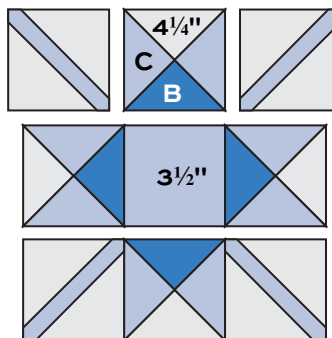
1. Join long Fabric F borders to sides of the polar bear panel. Join short borders to the top and bottom. Repeat with Fabric D borders. Press seam allowances away from the panel.
2. The little diagonal strips in the corners of the blocks are easily made in one of two ways. Method 1: Turn under the long edges of each Fabric B and Fabric C 1" x 5 1/2" strip so the strip is 1/2" wide (right side facing out). Position a strip diagonally on each Fabric E 3 1/2" square. Hand or machine stitch along the folded edges of the strip. Trim strips even with the corners of the E squares.  
  
Method 2: If you prefer to fuse these strips, fuse a lightweight webbing to the back of a 6" x 9" rectangle of Fabric B following manufacturer's directions. Cut 16 strips that are 1/2" x 5 1/2" (not 1" x 5 1/2"). Repeat with Fabric C strips. Fuse a strip diagonally to each Fabric E 3 1/2" square. Finish edges with a machine zigzag stitch or as you wish. Trim strips even with the squares.
3. Referring to the Block Y diagram, join 2 Fabric C quarter-square triangles with 1 Fabric B and 1 Fabric E quarter-square triangle to make a quarter-square unit. Make 16 units like this. Arrange 4 appliquéd squares from Step 2, 4 quarter-square units, and 1 Fabric C 3 1/2" square in 3 rows. Join the patches in each row, and then join the rows to make a block. Make 4 Block Y.
4. Referring to the Block Z diagram, make 4 Block Z, reversing the placement of the B and C fabrics.

# Beary Christmas Quilt

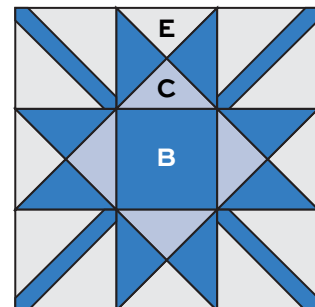
- Referring to the Quilt Diagram, lay out the blocks and Fabric E rectangles in the order shown. Join the parts to make 4 borders. Sew borders to the sides of the quilt, and then to the top and bottom.

## Finishing the Quilt

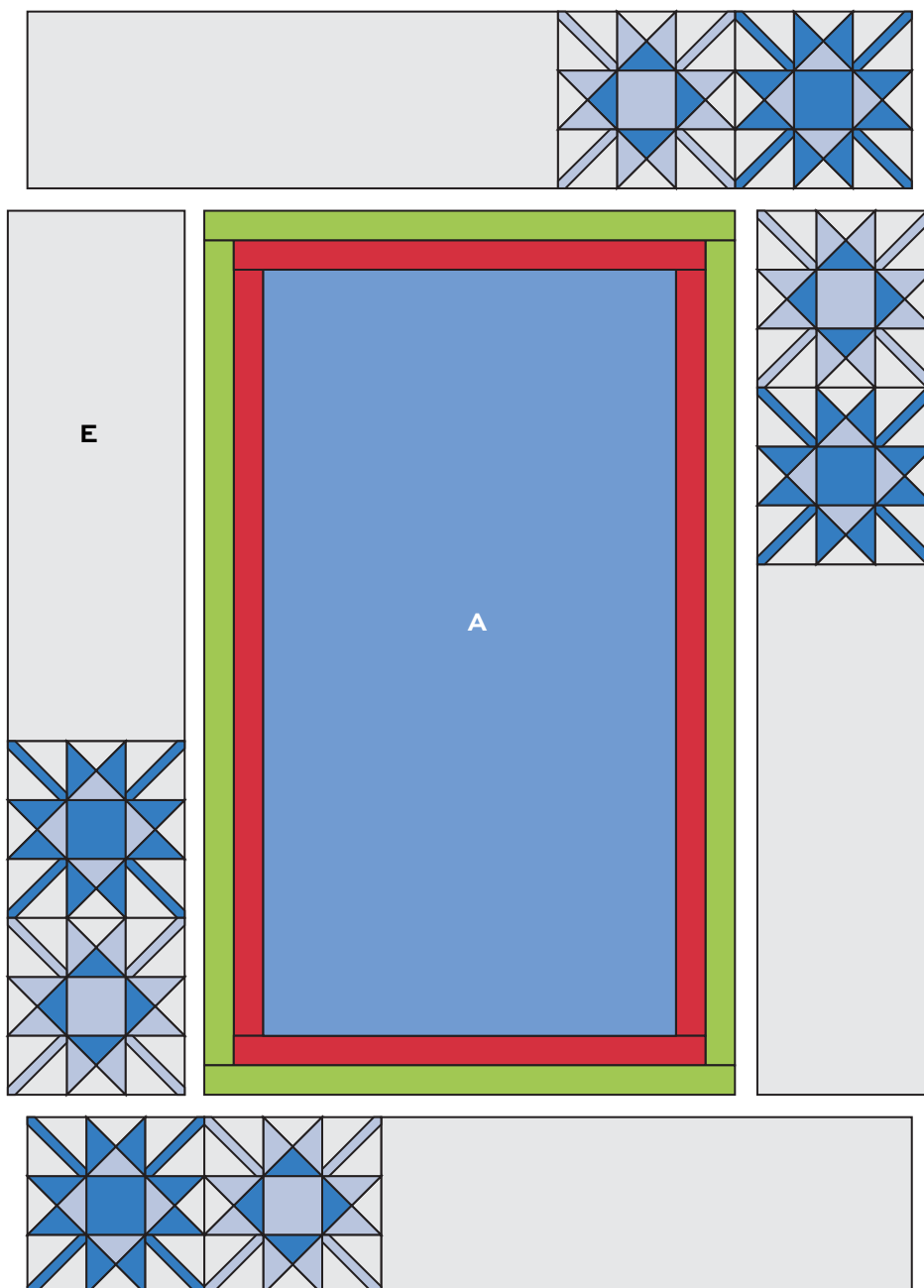
- Layer the quilt with batting and backing and baste. Quilt in the ditch around borders and block patches. Quilt around the printed motifs in the panel. Quilt the outer border as you wish. Bind to finish the quilt.



Block Y – Make 4



Block Z – Make 4



Quilt Diagram

# Northern Lights

BY ANDOVER FABRICS



9096-B\*



9097-B\*



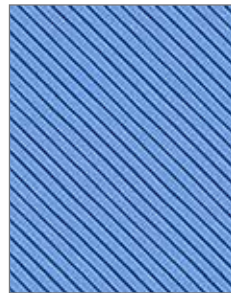
9097-BC\*



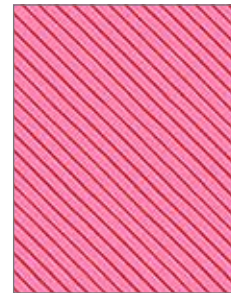
9097-R



9097-RC



9098-B



9098-E



9098-G\*



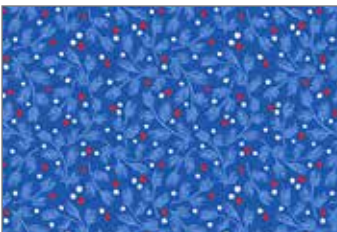
9099-B\*



9099-L\*



9099-R



9100-B



9100-R\*



9101-B



9101-R

\*Indicates fabrics used in quilt pattern. Fabrics shown are 15% of actual size.

andover : makower uk

Free Pattern Download Available

1384 Broadway New York, NY 10018  
Tel. (800) 223-5678 • andoverfabrics.com